

RNAV (GPS) RWY 20L

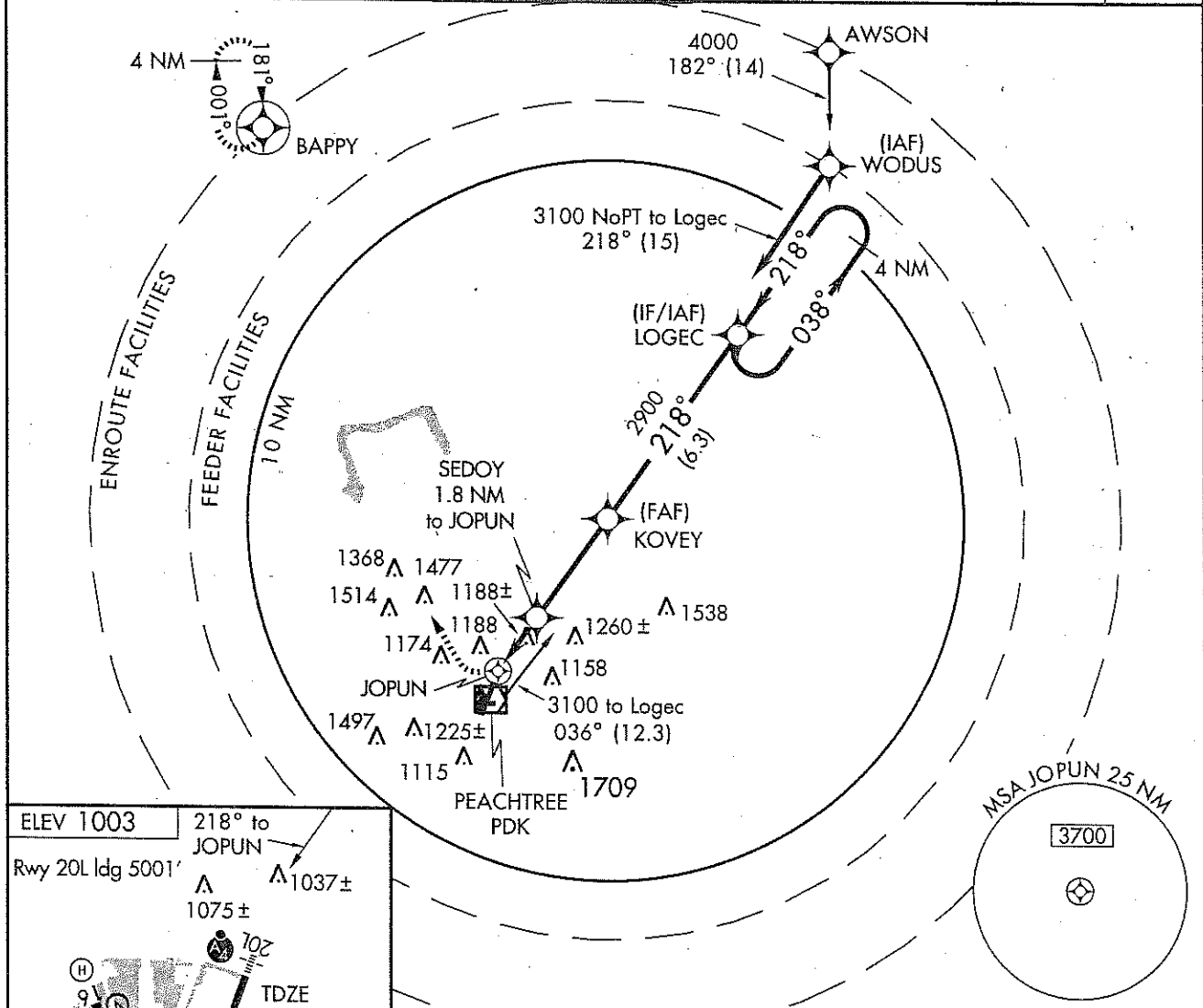
ATLANTA/DEKALB-PEACHTREE (PDK)

APP CRS	Rwy ldg	5001
218°	TDZE	991
	Apt Elev	1003

▼ If local altimeter setting not received, use Fulton County-Brown Field altimeter setting and increase all MDAs 60 feet. Circling to Rwy 2L, 9, 16, 20R, 27, 34 NA at night. Inoperative table does not apply to Cat. C. DME/DME RNP-0.3 NA.

MALSF MISSED APPROACH: Climbing right turn to 4000 direct BAPPY and hold.

ATIS 128.4	ATLANTA APP CON 126.975 239.275	PEACHTREE TOWER * 120.9 (CTAF) 281.5	GND CON 121.6	CLNC DEL 125.2 120.9* *when twr closed	UNICOM 122.95	120.0
---------------	------------------------------------	---	------------------	--	------------------	-------



SE-4, 12 MAY 2005 to 07 JUL 2005

SE-4, 12 MAY 2005 to 07 JUL 2005

ELEV 1003
Rwy 20L ldg 5001'

218° to JOPUN
△ 1037±
1075±

TDZE 991

0.7% UP

△ 1014±

△ 1079±

△ 1029±

HIRL Rwy 9-27
HIRL Rwy 2R-20L

REIL Rwys 2R, 9, 27 and 34
MIRL Rwys 16-34 and 2L-20R

4000	BAPPY	VDP NA when using Fulton County-Brown Field altimeter setting.	4 NM Holding Pattern
		KOVEY SEDOY 1.8 NM to JOPUN LOGEC 038° → 3100 ← 218°	
JOPUN 1 NM to JOPUN ≤ 3.05° TCH 58 1800 2900		VGSi and descent angles not coincident.	
CATEGORY	A	B	C
LNAV MDA	1500-¾ 509 (500-¾)	1500-1½ 509 (500-1½)	
CIRCLING	1500-1 497 (500-1)	1500-1½ 497 (500-1½)	1580-2 577 (600-2)